

# metrix®

Metrix Update Guide

## **Updating Metrix 3.6 to Metrix 3.6.2**

## Metrix 3.6.2 Updater Prerequisites

---

The Metrix 3.6.2 updater is to be used for updating Metrix 3.6 ONLY. If you are working with an earlier version of Metrix, you must first install Metrix 3.6, then run the Metrix 3.6.2 updater.

---

➔ Data loss could occur if you run the Metrix 3.6.2 updater on any version other than Metrix 3.6.

---

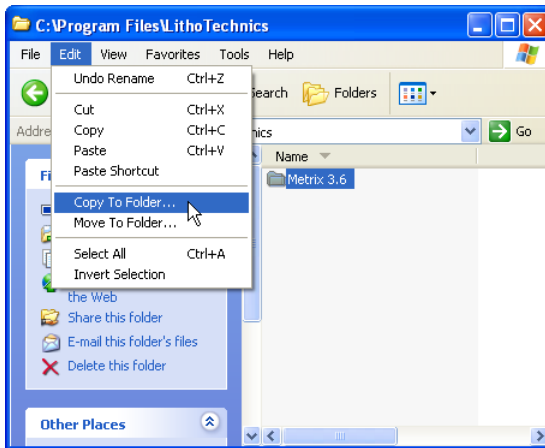
## Update Preparation: Shutdown and Backup

### Metrix Standalone

- 1 Quit Metrix.
- 2 Create a copy of your Metrix folder to ensure you have an up-to-date backup.

### Metrix Multi-User with Data Server

- 1 Ensure that **ALL** Metrix clients are shut down.
- 2 On the Data Server computer, execute **Stop\_Data\_Server** (Windows) or **Shutdown Data Server** (Mac). This is the method for shutting down the Data Server **at all times** – if the Data Server is ever shut down abruptly, some **data loss** may occur.
- 3 On the Data Server computer, create a copy of your Metrix folder to ensure you have an up-to-date backup.



## Updating Metrix 3.6 to Metrix 3.6.2

Launch and run the Metrix 3.6.2 updater.

In a multi-user environment, the Metrix 3.6.2 updater must be run on each Metrix client, as well as on the Metrix License Server / Metrix Data Server computer.

Select the Metrix 3.6 installation folder when prompted:

